

<b>Title:</b> SigmaWin+ Version 7 Usage Notes	
<b>Product(s):</b> SigmaWin+ Version 7.27	<b>Doc. No.</b> SigmaWinPlus_Ver.7

About This Document

This document provides information related to the installation and usage Yaskawa’s SERVOPACK Engineering Tool SigmaWin+ version 7.27 for Sigma-series AC SERVOPACKs. Read and understand this document to ensure the correct usage of SigmaWin+.

Contents

1. System Requirements .....	2
2. Upgrading Information .....	3
3. Installation Instructions .....	4
4. Additional Installation Notes .....	5
5. Release Notes .....	6
6. Installation Troubleshooting.....	8
7. Program Launch Troubleshooting .....	10
8. Program Usage Troubleshooting .....	13

## Title: SigmaWin+ Version 7 Usage Notes

**Product(s):** SigmaWin+ Version 7.27

**Doc. No.** SigmaWinPlus\_Ver.7

### 1. System Requirements

The computer to install and use SigmaWin+ requires the following specifications.

Specification	Requirement
Operating System	Microsoft Windows 7 SP1 64-bit / 32-bit Windows 8.1 64-bit / 32-bit Windows 10 64-bit / 32-bit
Processor	1 GHz or better
RAM	1 GB or more
Hard Drive Space	500 MB or more
Display	1280 × 720 (minimum)
Language	English, Chinese (Simplified Chinese), Japanese
Software	.NET Framework 4.6.2 or later (included in SigmaWin+ compressed archive)
	KB2999226* (Update for Universal C Runtime)
	Internet browser that supports HTML5 (For example: Microsoft Internet Explorer 9)

\* This update can only be installed if the PC is running Windows Update. For Windows 8.1, KB2919442 and KB2919355 must also be installed in order to install KB2999226.

Software	URL
KB2919442	<a href="https://support.microsoft.com/en-us/help/2919442/march-2014-servicing-stack-update-for-windows-8-1-and-windows-server-2">https://support.microsoft.com/en-us/help/2919442/march-2014-servicing-stack-update-for-windows-8-1-and-windows-server-2</a>
KB2919355	<a href="https://support.microsoft.com/en-us/help/2919355/windows-rt-8-1--windows-8-1--and-windows-server-2012-r2-update-april-2">https://support.microsoft.com/en-us/help/2919355/windows-rt-8-1--windows-8-1--and-windows-server-2012-r2-update-april-2</a>
KB2999226	<a href="https://support.microsoft.com/en-us/help/2999226/update-for-universal-c-runtime-in-windows">https://support.microsoft.com/en-us/help/2999226/update-for-universal-c-runtime-in-windows</a>

**Title:** SigmaWin+ Version 7 Usage Notes**Product(s):** SigmaWin+ Version 7.27**Doc. No.** SigmaWinPlus\_Ver.7

## 2. Upgrading Information

The below information describes the change of computer requirements in order to use this version of SigmaWin+.

1. .NET Framework Requirement Change
  - a. SigmaWin+ Version 7.23 to 7.26 required Microsoft .NET framework 4.5.2 or 4.6.
  - b. SigmaWin+ Version 7.27 requires Microsoft .NET framework 4.6.2.

## Title: SigmaWin+ Version 7 Usage Notes

**Product(s):** SigmaWin+ Version 7.27

**Doc. No.** SigmaWinPlus\_Ver.7

### 3. Installation Instructions

Below are the steps to follow to install SigmaWin+.

1. Confirm that the computer meets the system requirements defined in [1. System Requirements](#).
2. If a previous version of SigmaWin+ version 7 exists, then uninstall it.
  - Note: SigmaWin+ version 5 can coexist with SigmaWin+ version 7. SigmaWin+ version 5 does not need to be uninstalled.
3. Extract the entire contents, maintaining the directory structure, of the SigmaWin+ compressed archive (\*.zip file).
4. If not already installed, run and install .NET framework 4.6.2 **NDP462-KB3151800-x86-x64-AllOS-ENU.exe**. This is included in the SigmaWin+ compressed archive.
  - Note: If SigmaWin+ is installed to PC without installing .NET Framework to it, errors may occur and SigmaWin+ will not installed.
  - Note: .NET Framework is produced by Microsoft. For details, refer to the following:

Item	URL
.NET Framework Details	<a href="https://www.microsoft.com/en-us/download/details.aspx?id=53344">https://www.microsoft.com/en-us/download/details.aspx?id=53344</a>
.NET Framework Versions and Dependencies	<a href="https://msdn.microsoft.com/en-us/library/bb822049(v=vs.110).aspx">https://msdn.microsoft.com/en-us/library/bb822049(v=vs.110).aspx</a>
.NET Framework System Requirements	<a href="https://msdn.microsoft.com/en-us/library/8z6watww(v=vs.110).aspx">https://msdn.microsoft.com/en-us/library/8z6watww(v=vs.110).aspx</a>

5. Run and install **SigmaWinPlus7\_installer.exe** from the extracted SigmaWin+ archive.

**Title:** SigmaWin+ Version 7 Usage Notes**Product(s):** SigmaWin+ Version 7.27**Doc. No.** SigmaWinPlus\_Ver.7

#### 4. Additional Installation Notes

Below are notes related to the installation of SigmaWin+

1. The following programs are installed if a newer version does not already exist on the computer:

Name	Publisher	Size	Version
Microsoft Access database engine 2010 (English)	Microsoft Corporation	108 MB	14.0.7015.1000
Microsoft Primary Interoperability Assemblies 2005	Microsoft Corporation	7.75 MB	9.0.21022

Note: Uninstalling SigmaWin+ does not uninstall these programs.

## Title: SigmaWin+ Version 7 Usage Notes

**Product(s):** SigmaWin+ Version 7.27

**Doc. No.** SigmaWinPlus\_Ver.7

### 5. Release Notes

Refer to the table below for improvements and corrections

#### ➤ SigmaWin+ Version 7.27 (upgrade from version 7.26)

#	Item	Category	Description										
1	Installation of FT components	Improvement	SigmaWin+ now installs the FT components with the main program installer. Previous versions of SigmaWin+ required the FT components to be installed manually.										
2	Supports new SERVOPACK firmware	Improvement	SigmaWin+ 7.27 supports new SERVOPACK firmware.										
3	Edit Parameter window, when connected with MPE720 using Ethernet Option Module 218IF-01/02	Correction	<p>Corrected the Edit Parameter not starting under the following condition: SigmaWin+ connection via MPE720 through the Ethernet Option Module 218IF-01 or 218IF-02.</p> <p>[Applicable Models] SERVOPACKs with MECHATROLINK communications</p> <p>Note: If SigmaWin+ is connected through a Controller, SigmaWin+ will not support communications via the Ethernet Optional Module (218IF-01/02).</p>										
4	Parameter display: Pn493, Pn494	Correction	<p>Corrected the missing display of Pn493 and Pn494 that existed in SigmaWin+ version 7.26.</p> <p>[Applicable Models]</p> <table><tr><td>SGD7S-□□□□00</td><td>SGD7W-□□□□20</td></tr><tr><td>SGD7S-□□□□10</td><td>SGD7W-□□□□30</td></tr><tr><td>SGD7S-□□□□20</td><td>SGD7W-□□□□A0</td></tr><tr><td>SGD7S-□□□□30</td><td></td></tr><tr><td>SGD7S-□□□□E0</td><td></td></tr></table>	SGD7S-□□□□00	SGD7W-□□□□20	SGD7S-□□□□10	SGD7W-□□□□30	SGD7S-□□□□20	SGD7W-□□□□A0	SGD7S-□□□□30		SGD7S-□□□□E0	
SGD7S-□□□□00	SGD7W-□□□□20												
SGD7S-□□□□10	SGD7W-□□□□30												
SGD7S-□□□□20	SGD7W-□□□□A0												
SGD7S-□□□□30													
SGD7S-□□□□E0													
5	Input Signal names (SI1 to SI3) for the SERVOPACKs with analog voltage/pulse train references	Correction	<p>The input signal names for CN1-41, CN1-42, and CN1-43 have been changed to the names used in the product manual:</p> <table><tr><th>Before Change</th><th>After Change</th></tr><tr><td>SI1 (CN1-41)</td><td>SI3 (CN1-41)</td></tr><tr><td>SI2 (CN1-42)</td><td>SI1 (CN1-42)</td></tr><tr><td>SI3 (CN1-43)</td><td>SI2 (CN1-43)</td></tr></table> <p>[Applicable Model] SGD7S-□□□□00</p>	Before Change	After Change	SI1 (CN1-41)	SI3 (CN1-41)	SI2 (CN1-42)	SI1 (CN1-42)	SI3 (CN1-43)	SI2 (CN1-43)		
Before Change	After Change												
SI1 (CN1-41)	SI3 (CN1-41)												
SI2 (CN1-42)	SI1 (CN1-42)												
SI3 (CN1-43)	SI2 (CN1-43)												

**Title:** SigmaWin+ Version 7 Usage Notes

**Product(s):** SigmaWin+ Version 7.27

**Doc. No.** SigmaWinPlus\_Ver.7

#	Item	Category	Description
6	Pn880 display	Correction	The display of the Pn880 value was changed from the decimal number system to the hexadecimal number system.  [Applicable Models] SGD7S-□□□□10 SGDV-□□□□11□
7	Pn001 & Pn515 display	Correction	Pn001 and Pn515 are now displayed.  [Applicable Models] SGD7S-□□□□D30 SGD7S-□□□□DA0

## Title: SigmaWin+ Version 7 Usage Notes

**Product(s):** SigmaWin+ Version 7.27

**Doc. No.** SigmaWinPlus\_Ver.7

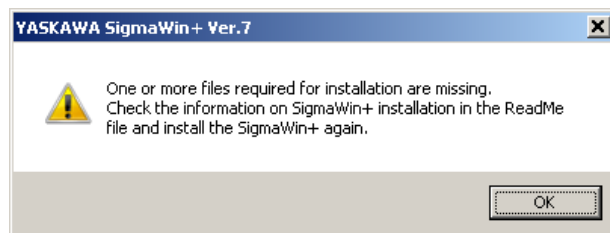
## 6. Installation Troubleshooting

### 6.1. Symptom:

Windows Message:

YASKAWA SigmaWin+ Ver.7

One or more files required for installation are missing.  
Check the information on SigmaWin+ installation in the ReadMe file and install the SigmaWin+ again.



### Causes:

1. The SigmaWinPlus7\_installer.exe file and the AppendFiles folder are not in the same directory.
2. The SigmaWinPlus7\_installer.exe was launched from the SigmaWin+ compressed archive (the archive was not completely extracted).

### Remedy:

Extract the entire contents of the SigmaWin+ compressed archive, preserving the directory structure, and then run the SigmaWinPlus7\_installer.exe executable file. An example of the contents extracted preserving the structure is as follows:

- AppendFiles
- Driver
- NDP462-KB3151800-x86-x64-AllOS-ENU.exe
- SigmaWin+ Ver. 7 Usage Notes [ReadMe file].pdf
- SigmaWinPlus7\_Installer.exe



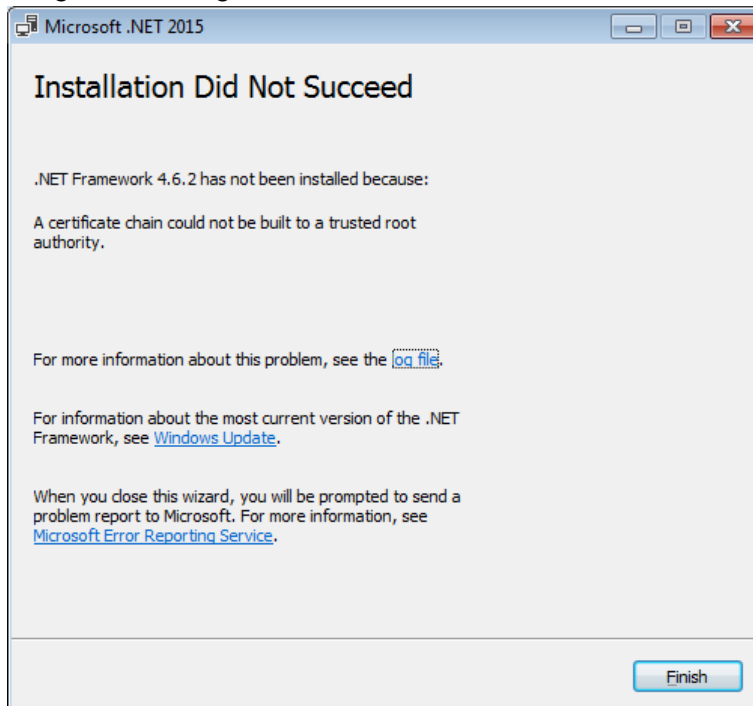
**Title:** SigmaWin+ Version 7 Usage Notes

**Product(s):** SigmaWin+ Version 7.27

**Doc. No.** SigmaWinPlus\_Ver.7

## 6.2. Symptom:

Program Message: Microsoft .NET 2015: Installation Did Not Succeed



## Cause:

The above error may result when installing .NET Framework 4.6.2 if the operating system is Windows 7 SP1, and the computer is offline, or in an environment where updates cannot be downloaded and installed from Windows Update.

## Remedy:

Download and install the certificate to install .NET Framework 4.6.2 successfully.

Refer to: <https://blogs.msdn.microsoft.com/jpvsblog/2016/10/04/ndp462-offline-install/>

**Title:** SigmaWin+ Version 7 Usage Notes

**Product(s):** SigmaWin+ Version 7.27

**Doc. No.** SigmaWinPlus\_Ver.7

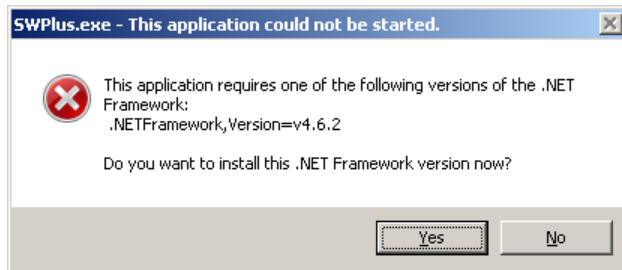
## 7. Program Launch Troubleshooting

### 7.1. Symptom:

Windows Message:

SWPlus.exe – This application could not be started.

This application requires one of the following versions of the .NET Framework: .NET Framework,Version=v4.6.2  
Do you want to install this .NET Framework version now?



### Cause:

When launching SigmaWin+, if the .NET Framework 4.6.2 is not installed, the error message will appear.

### Remedy:

Install the .NET Framework 4.6.2 as described in [3. Installation Instructions](#).

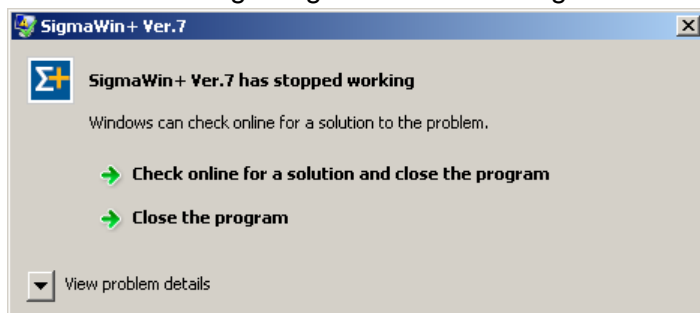
**Title:** SigmaWin+ Version 7 Usage Notes

**Product(s):** SigmaWin+ Version 7.27

**Doc. No.** SigmaWinPlus\_Ver.7

## 7.2. Symptom:

Windows Message: SigmaWin+ Ver.7: SigmaWin+ Ver.7 has stopped working



## Cause:

When launching SigmaWin+, if KB2999226 (Update for Universal C Runtime) is not present. This software is a requirement for SigmaWin+.

## Remedy:

Install KB2999226 as referenced in [1. System Requirements](#).

## Title: SigmaWin+ Version 7 Usage Notes

**Product(s):** SigmaWin+ Version 7.27

**Doc. No.** SigmaWinPlus\_Ver.7

### 7.3. Symptom:

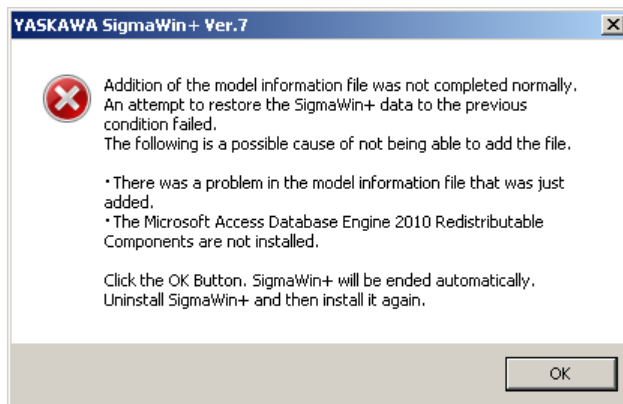
Program Message:

YASKAWA SigmaWin+ Ver.7

Addition of the model information file was not completed normally.  
An attempt to restore the SigmaWin+ data to the previous condition failed.  
The following is a possible cause of not being able to add the file.

- There was a problem in the model information file that was just added.
- The Microsoft Access Database Engine 2010 Redistributable Components are not installed.

Click the OK Button. SigmaWin+ will be ended automatically.  
Uninstall SigmaWin+ and then install it again.



### Causes:

1. The Microsoft Access Database Engine 2010 was removed or was not installed automatically by SigmaWin+. Refer to [4. Additional Installation Notes](#) for details on the Microsoft Access Database Engine 2010 that SigmaWin+ automatically installs.
2. The Microsoft Access Database Engine that exists on the computer cannot be used by SigmaWin+.

### Remedy:

Reinstall SigmaWin+. If problems still occur, install the Microsoft Access Database Engine before installing SigmaWin+. The Microsoft Access Database Engine can be obtained from Microsoft.

## Title: SigmaWin+ Version 7 Usage Notes

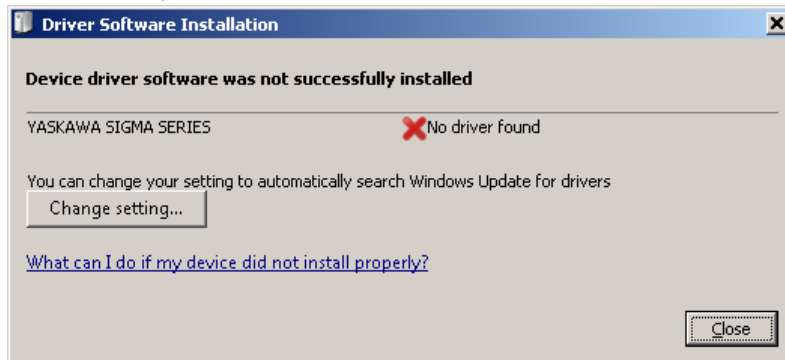
**Product(s):** SigmaWin+ Version 7.27

**Doc. No.** SigmaWinPlus\_Ver.7

## 8. Program Usage Troubleshooting

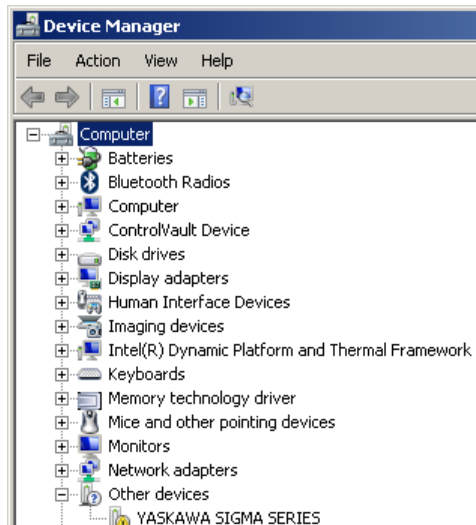
### 8.1. Symptom:

Windows Message: Driver Software Installation: Device driver software was not successfully installed



OR:

“YASKAWA SIGMA SERIES” appears in Device Manager in the category “Other devices”



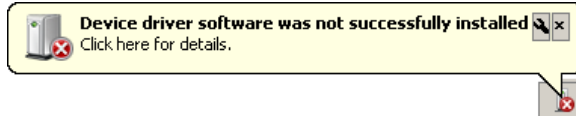
## Title: SigmaWin+ Version 7 Usage Notes

**Product(s):** SigmaWin+ Version 7.27

**Doc. No.** SigmaWinPlus\_Ver.7

OR:

“Device driver software was not successfully installed” appears in the Windows system tray.



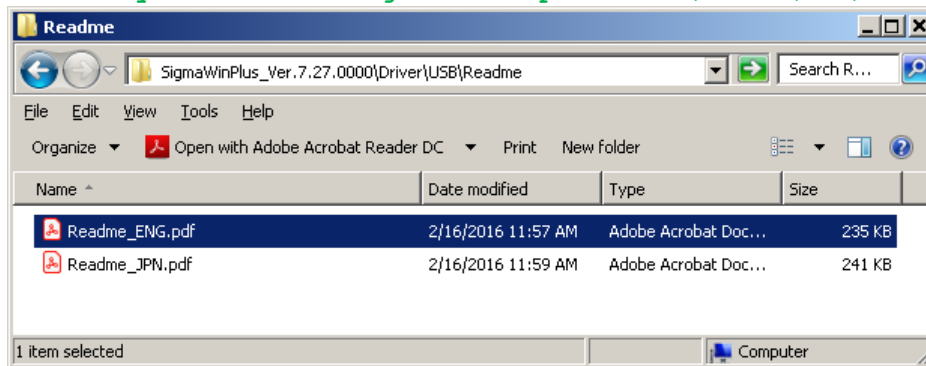
### Cause:

When connecting a SERVOPACK to the computer with a USB cable, the Windows message appears. The USB driver for the SERVOPACK is not installed.

### Remedy:

Install the USB driver for the Sigma Series SERVOPACK. Instructions are found at:

<Directory of extracted SigmaWin+ .zip archive>\Driver\USB\Readme\Readme\_ENG.pdf



**Title:** SigmaWin+ Version 7 Usage Notes

**Product(s):** SigmaWin+ Version 7.27

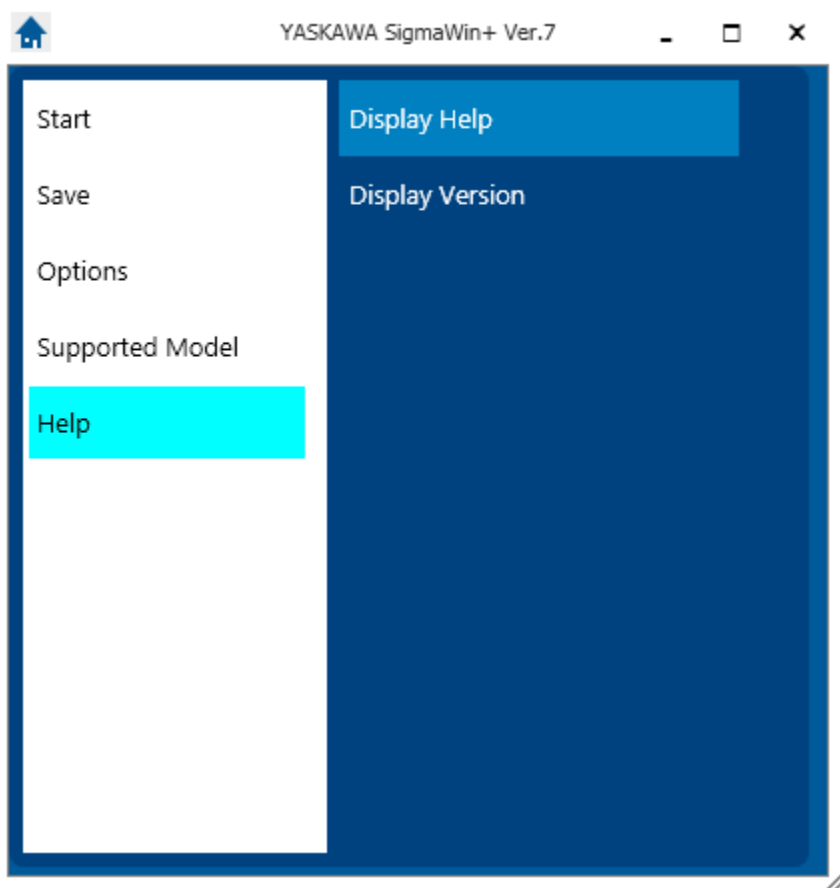
**Doc. No.** SigmaWinPlus\_Ver.7

## 8.2. Symptom: (All other symptoms not described in this document)

### Remedy:

Refer to SigmaWin+ Help.

The Help can be found by launching SigmaWin+ and selecting the menu as shown:



Alternatively, the help file can be viewed in an HTML5-compatible browser.

The default location of the help file is at:

`C:/Program Files (x86)/YASKAWA/SigmaWinPlus7/Help/SigmaWinV7Help.html`